

# ***Project Controls Enabled Acceleration and Efficiency: £Billion Road Infrastructure Delivery***

Project Controls Expo - Nov 2021

© 2021 National Highways

**Laura Gilmore**

PMO Director - Regional Investment Programme (North)

**Lee Hillyard**

A66 Project Director







# National Highways and the Regional Investment Programme



# People rely on our roads

To connect people and to drive the economy

**95**

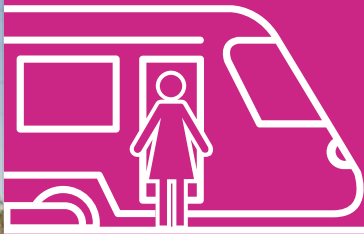
billion miles  
travelled on the  
SRN every year



Carrying

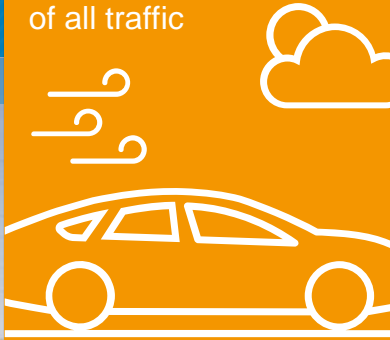
**3x**

more people than  
the UK rail network



**34%**

of all traffic



and

**68%**

of all freight



Since 2015  
We have reduced  
the number of  
casualties on  
our roads by

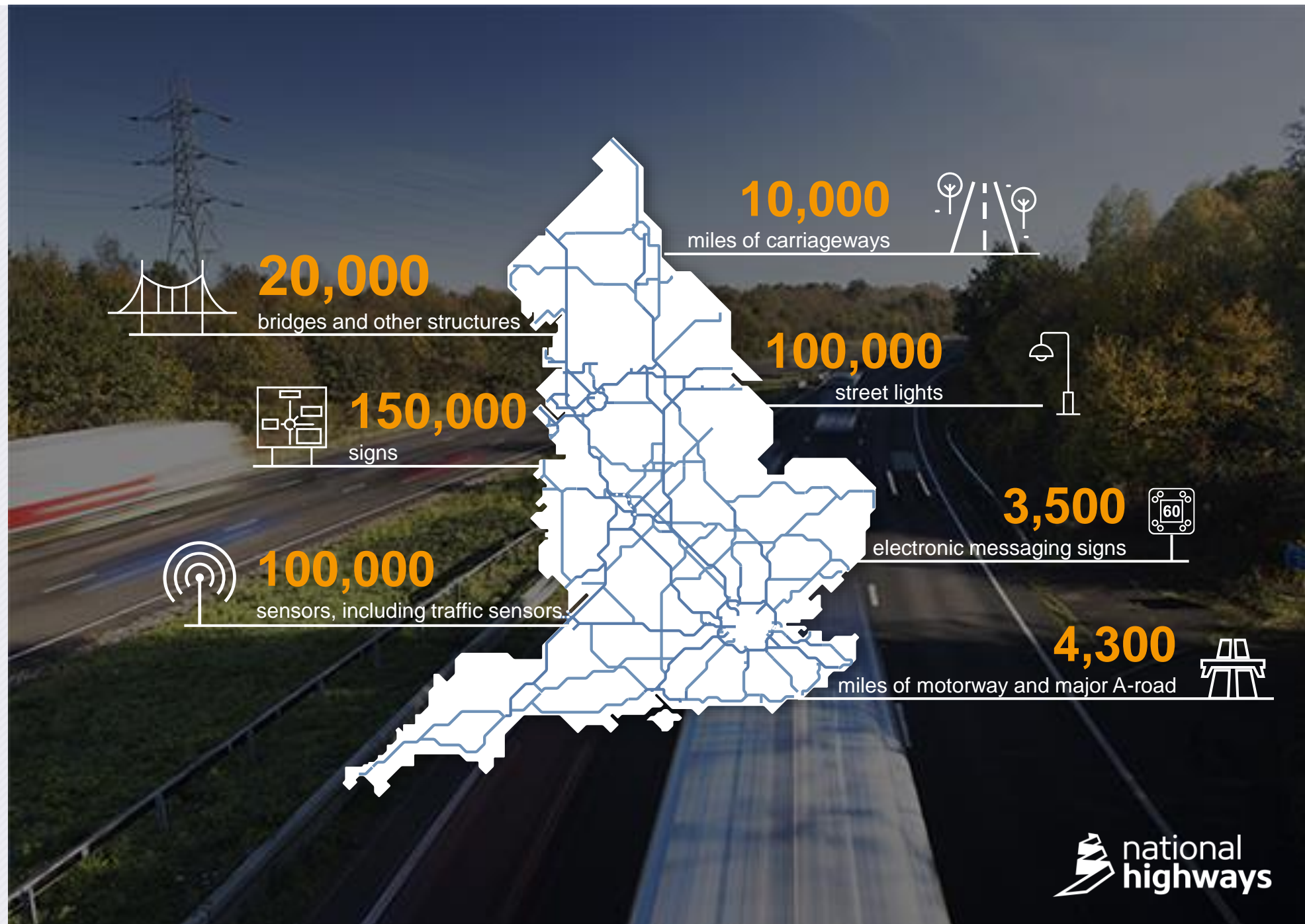
**↓ 18%**





## Our road network

We manage and improve over 4,300 miles of motorways and major roads in England known as the strategic road network

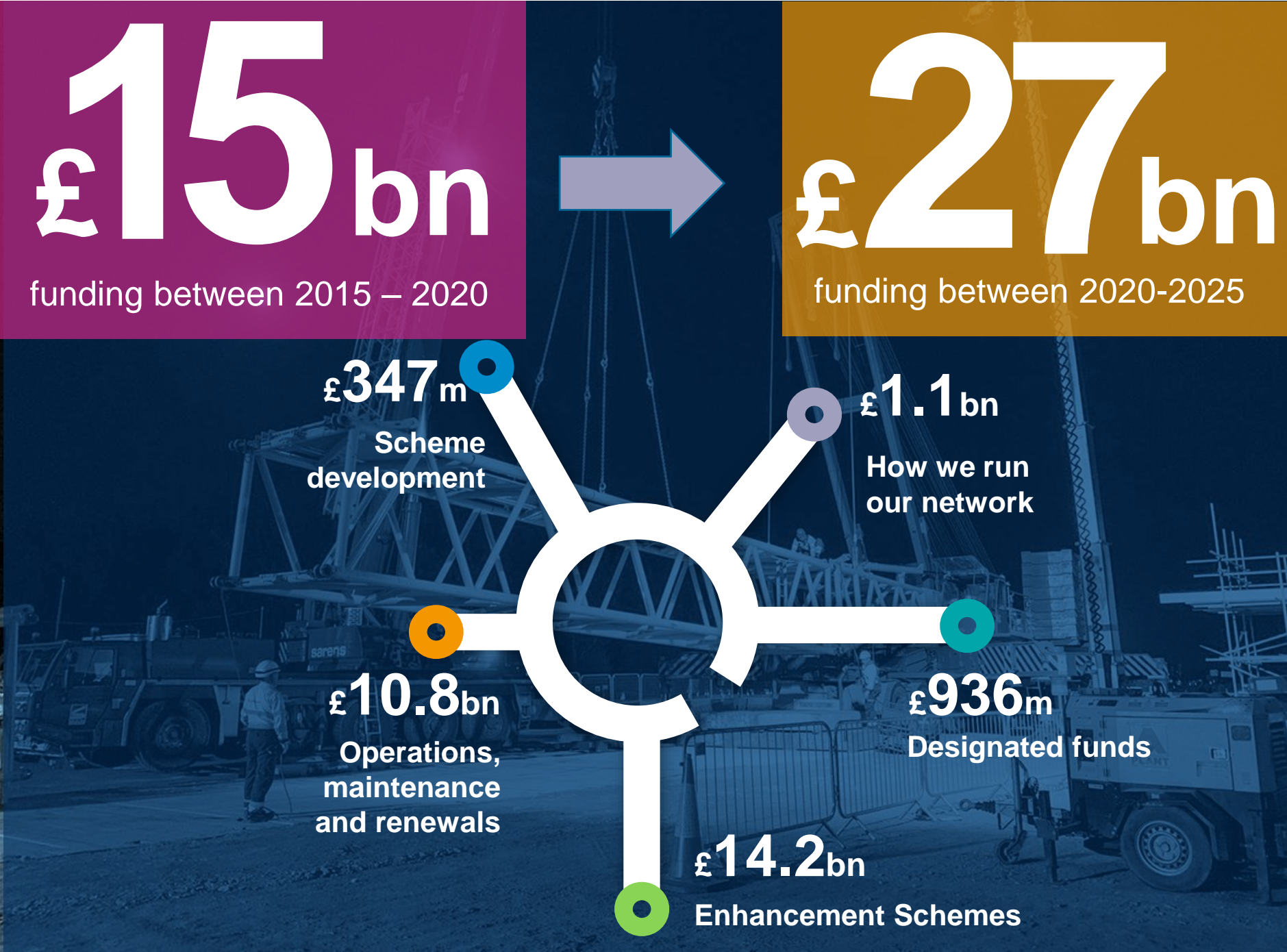




# National Highways

Established in 2015,  
we are a government  
owned, publicly  
funded company

We receive funding  
from the Department  
for Transport in five-  
year cycles called  
Road Investment  
Periods.



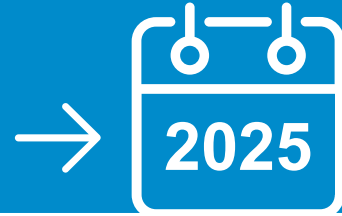


## Delivery

Providing value for money, minimising disruption and enhancing the nation's economy, while leaving a positive legacy for communities and the environment.

**50+**

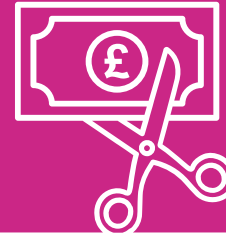
schemes in the next 5 years



Over

**£2bn**

of efficiencies



Over **£14bn** invested and **£27bn** in benefits to businesses and road users from enhancement schemes



Support government's ambition for net zero carbon by 2050



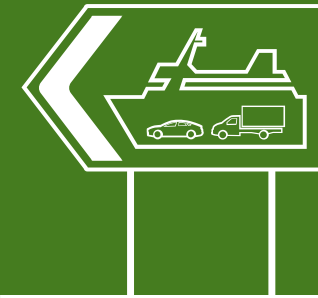
Help to support up to

**64,000**

jobs



**Connections beyond the SRN** will be created





# The Regional Investment Programme (North)

**£7bn** current portfolio value

**£3bn** to be spent 2020-2025

**23** Major Investment schemes in development or construction across the Midlands & North of England

RIP North includes the **£1.1Bn** A66 upgrade project which is one of the largest and most significant investments in the north

**Project Speed** Pathfinder

☆☆☆ **Better** **Greener** **Faster**







# **The A66: *The biggest road investment project in the North***



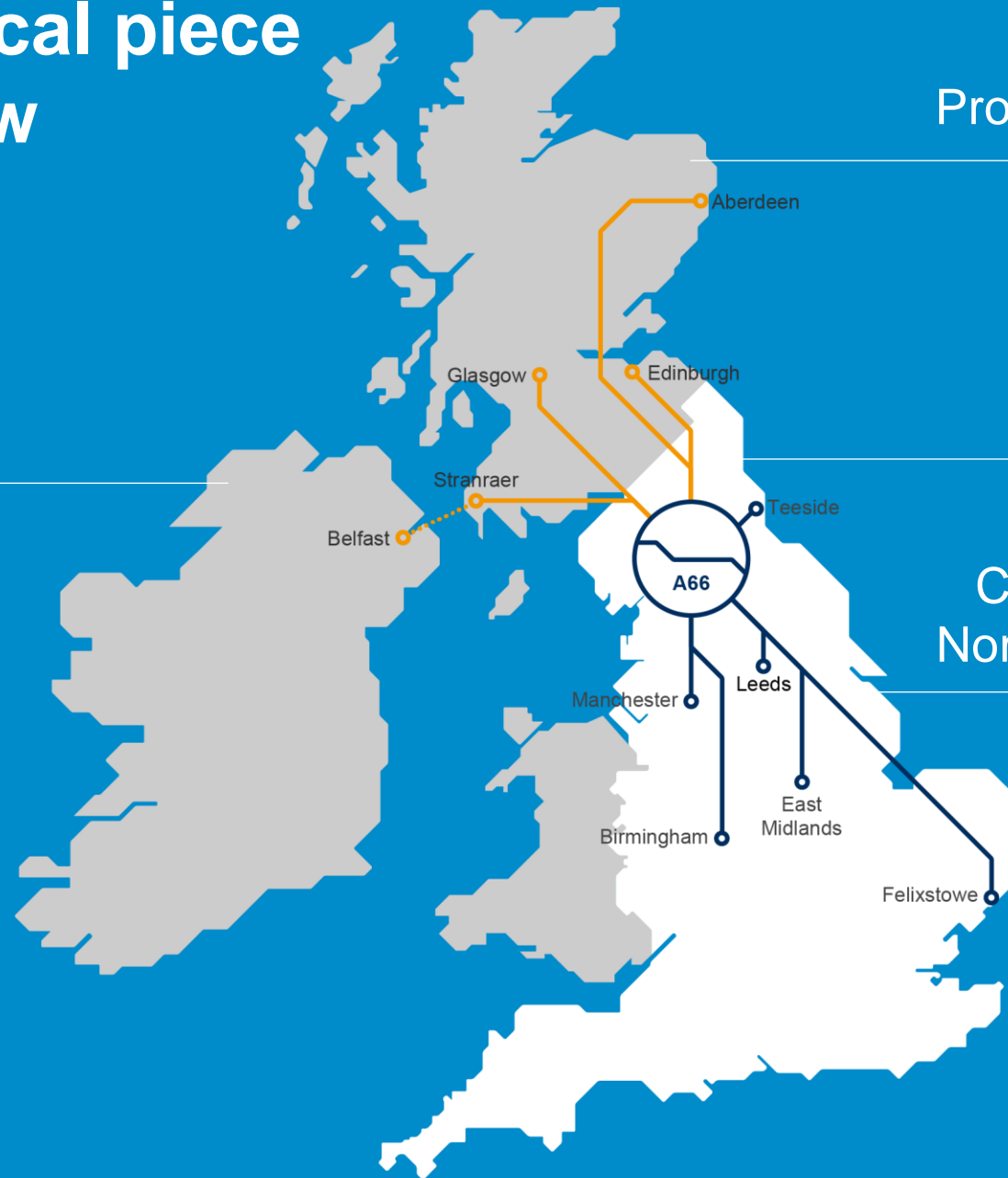
# The A66 is critical piece in the UK jigsaw

Bringing traffic to and from Northern Ireland

Providing access to Scotland

Linking the North East and the North West

Connecting Cumbria, Durham and North Yorkshire to the rest of the UK





# Improving the A66

- £1bn+ investment overall
- One of the largest and most significant investments in the north
- Complete the dualling of the 50-mile trans-pennine route.
- 18 miles of new dualled carriageway
- Improved junctions at:
  - Kemplay Bank
  - Junction 40 on the M6
  - Scotch Corner on the A1(M)
- Minimise disruption during construction phase
- Start of Works 2024; Open for Traffic 2029
- Project Speed – Acceleration of the construction phase from 10 years to 5 years





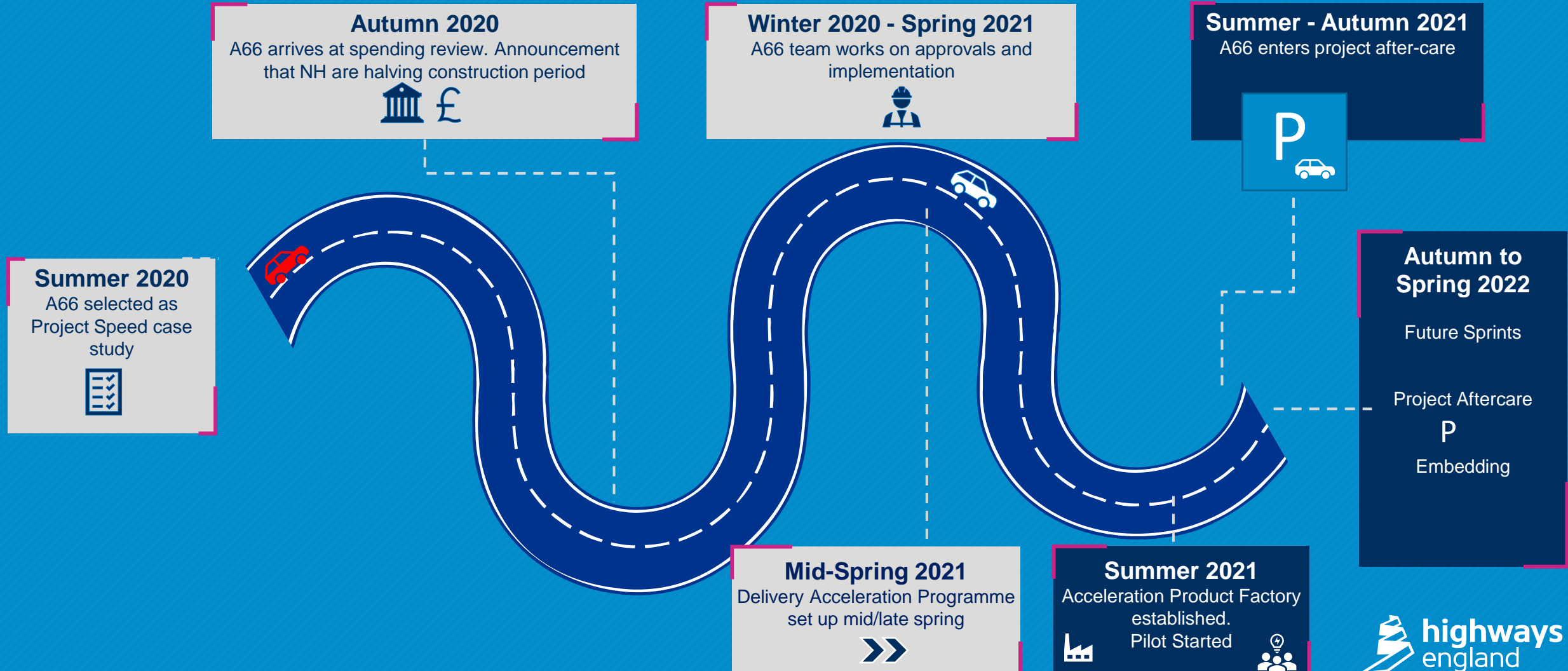
# Applying our A66 learnings to the rest of our Major Projects



# From Project Speed to Delivery Acceleration

What do we want to achieve?

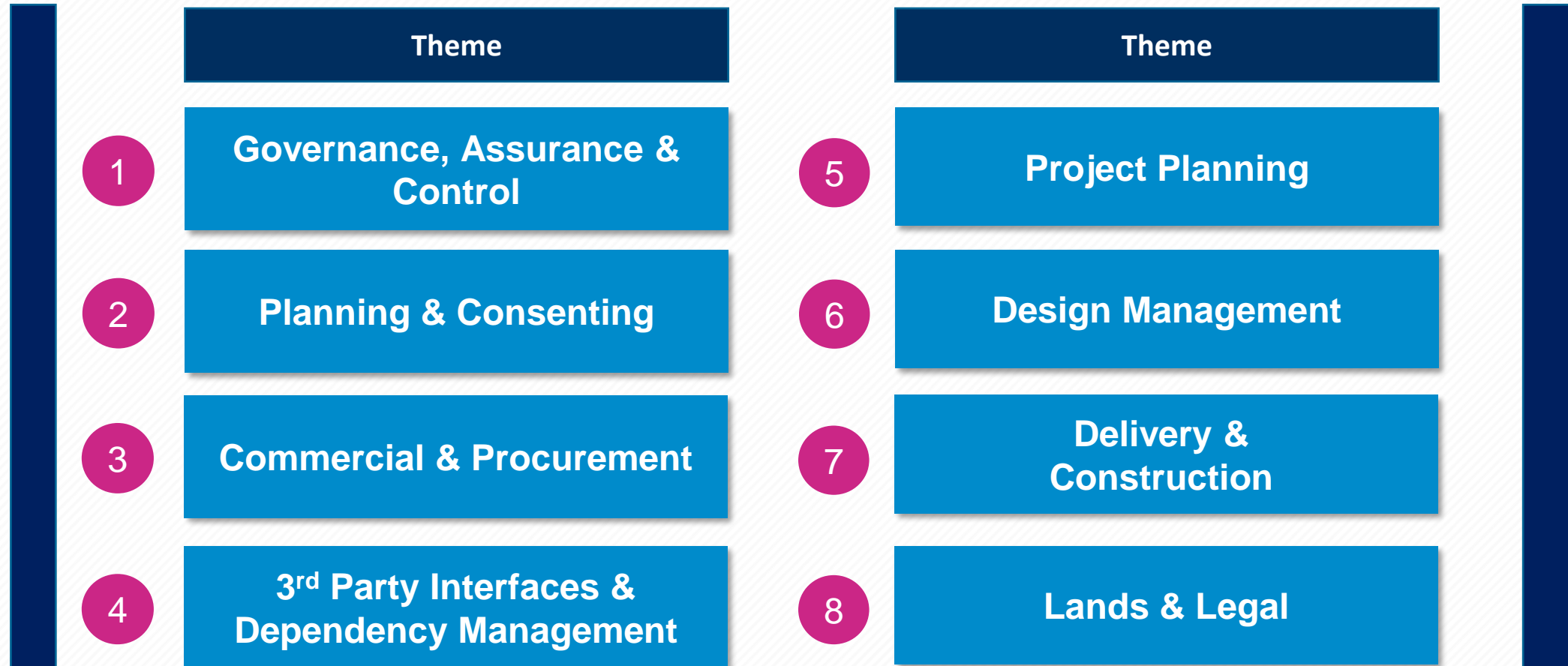
*'To challenge how to accelerate project delivery before the end of RIS2'*





# Key acceleration themes are emerging?

We have identified **eight emerging themes** which are key to realising time savings opportunities.



**To release savings all themes place strong integrated project controls at the centre of delivery reviews & decision making**



# What have we learned?

1. Collaboration & engagement with partner agencies and supply chain is essential
2. A product approach is the most scalable, efficient & sustainable
3. Strong integrated baseline management is essential
4. Focus on de-risk schedules by building back float

**Better** – Focus on investments with strategic outcomes, builds further opportunities.

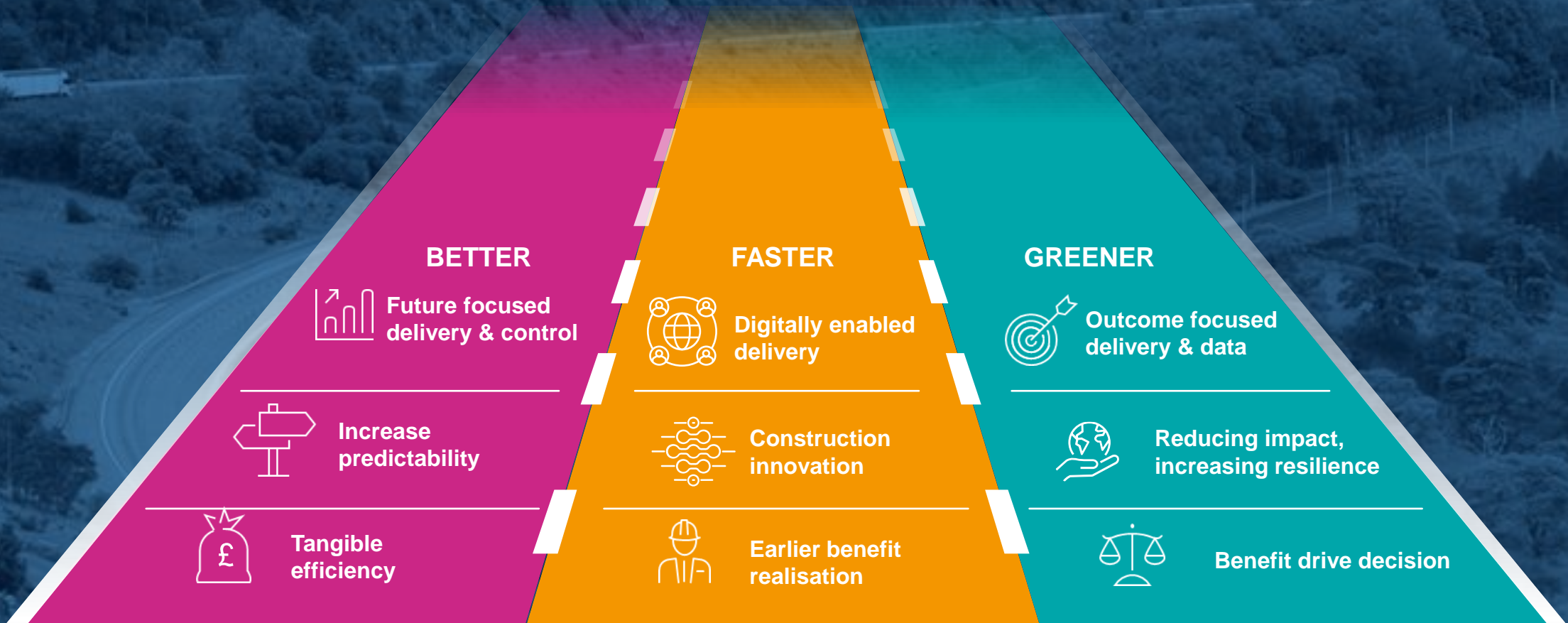
**Faster** – Now. Realise benefits earlier. Pipeline of investments

**Greener** – Project and reduce the impact on the planet – Carbon, Bio-Diversity, win-win opportunities.





# Where are we going with our project controls?







# Any questions?